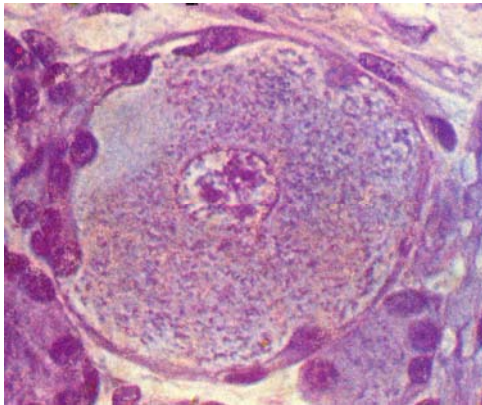
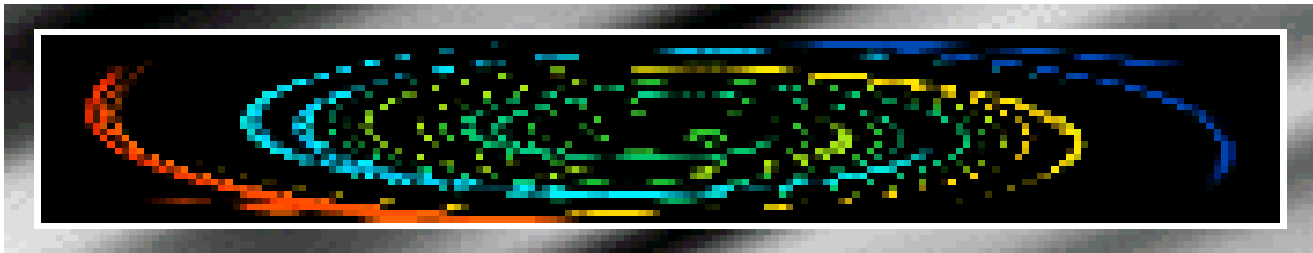


Histology and Embryology



Chapter 1 Introduction and Cell	Chapter 11 Digestive Tract
<u>Chapter 2 Epithelial tissue</u>	Chapter 12 Digestive Gland
Chapter 3 Connective Tissue	Chapter 13 Respiratory System
Chapter 4 Blood	Chapter 14 Urinary System
Chapter 5 Cartilage and Bone	Chapter 15 Endocrine System
Chapter 6 Muscle Tissue	Chapter 16 Sense Organ
Chapter 7 Nerve Tissue	Chapter 17 Male Reproduction
Chapter 8 Circulatory System	Chapter 18 Female Reproduction
Chapter 9 Immune System	Chapter 19 Embryology 1
Chapter 10 Skin	Chapter 20 Embryology 2

Chapter 2 Epithelial Tissue

I Slides

II Sections:

No. 39 simple squamous epithelium

No.59 simple columnar epithelium

No.79 pseudostratified ciliated columnar epithelium

No.55 stratified squamous epithelium

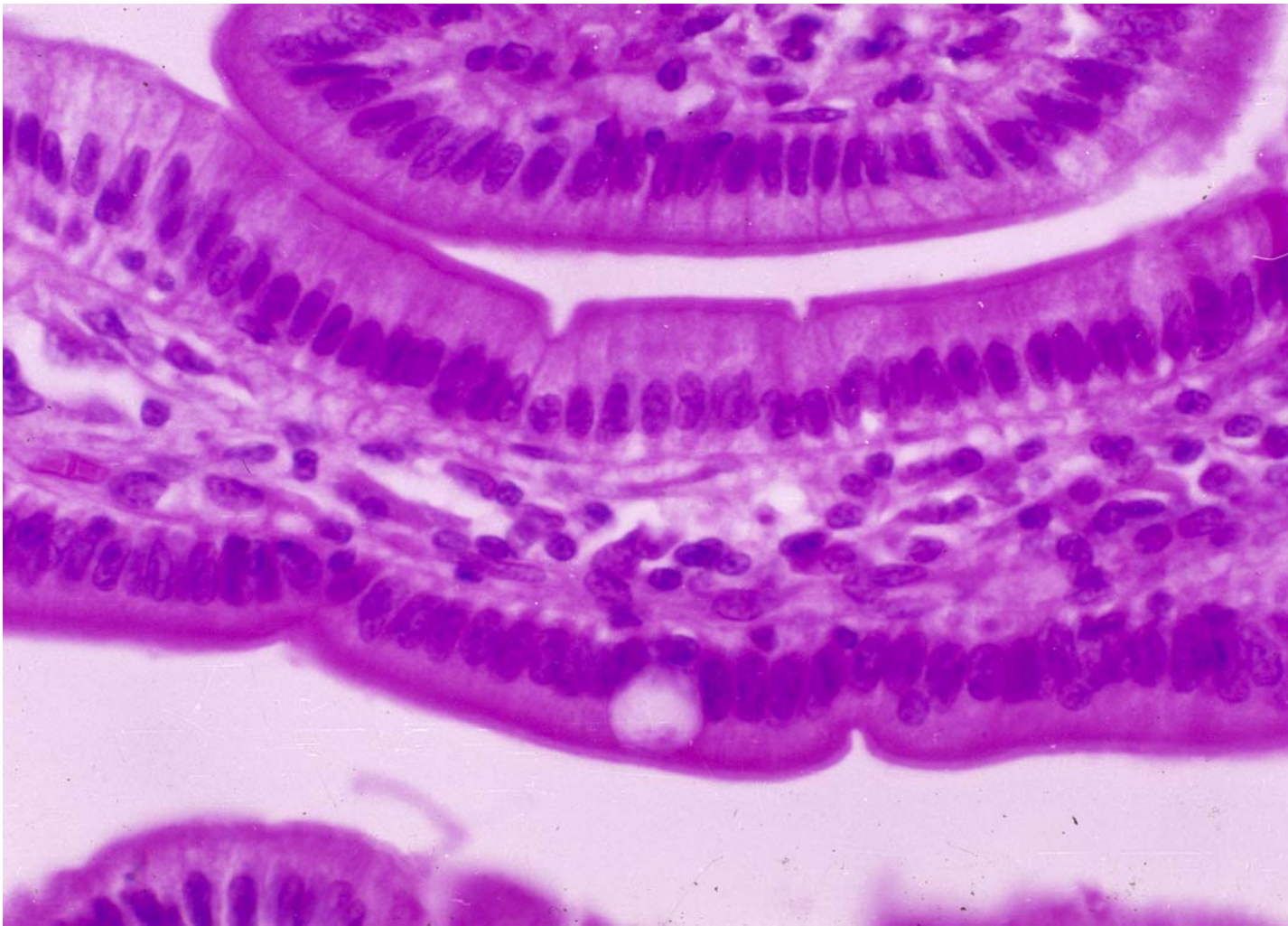
No.85 Transitional epithelium

No.66 Glandular epithelium

III EM photos: 6—10

IV Drawing: Simple columnar epithelium





Simple columnar epithelium

Material :

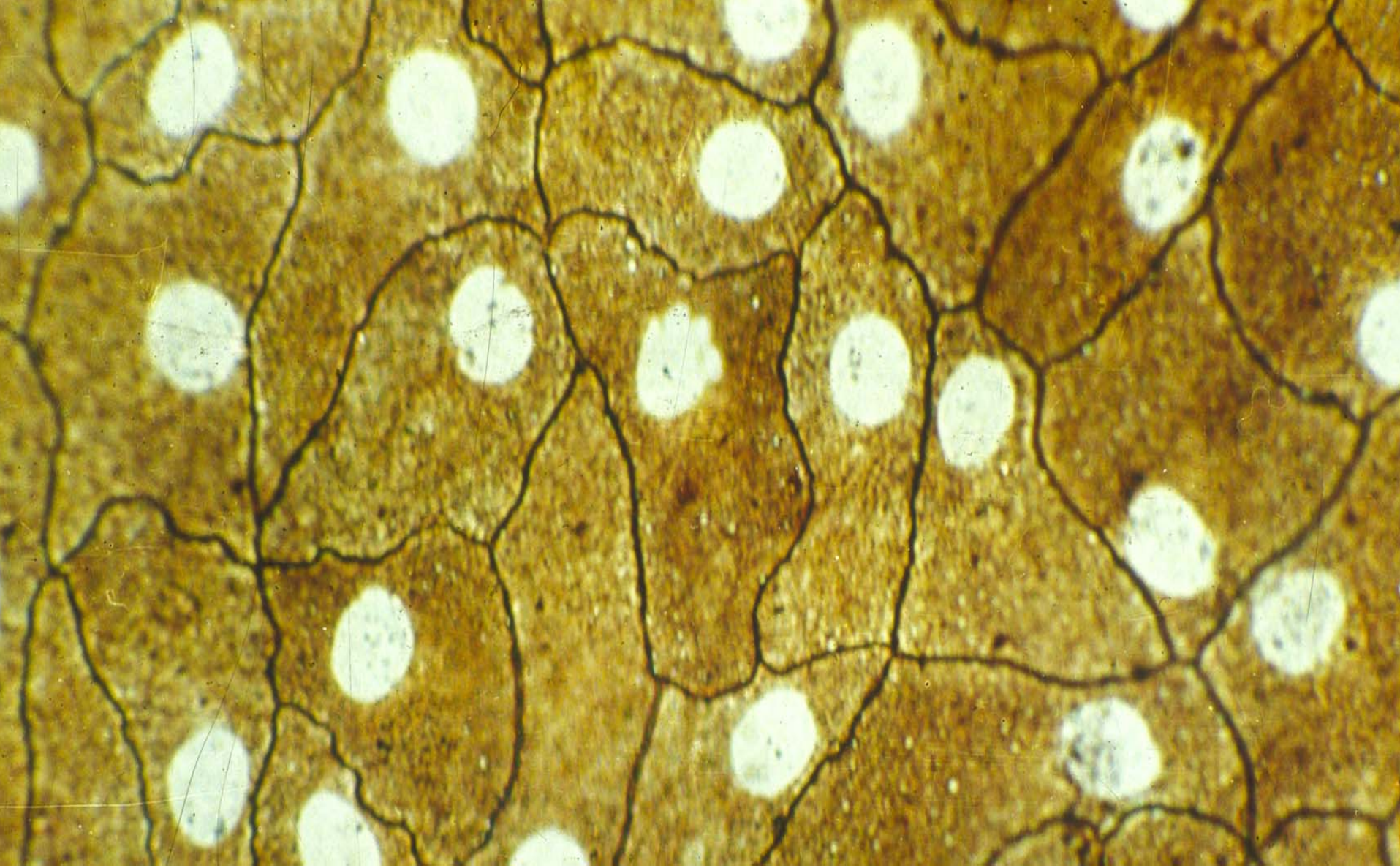
Staining :

Amplification:

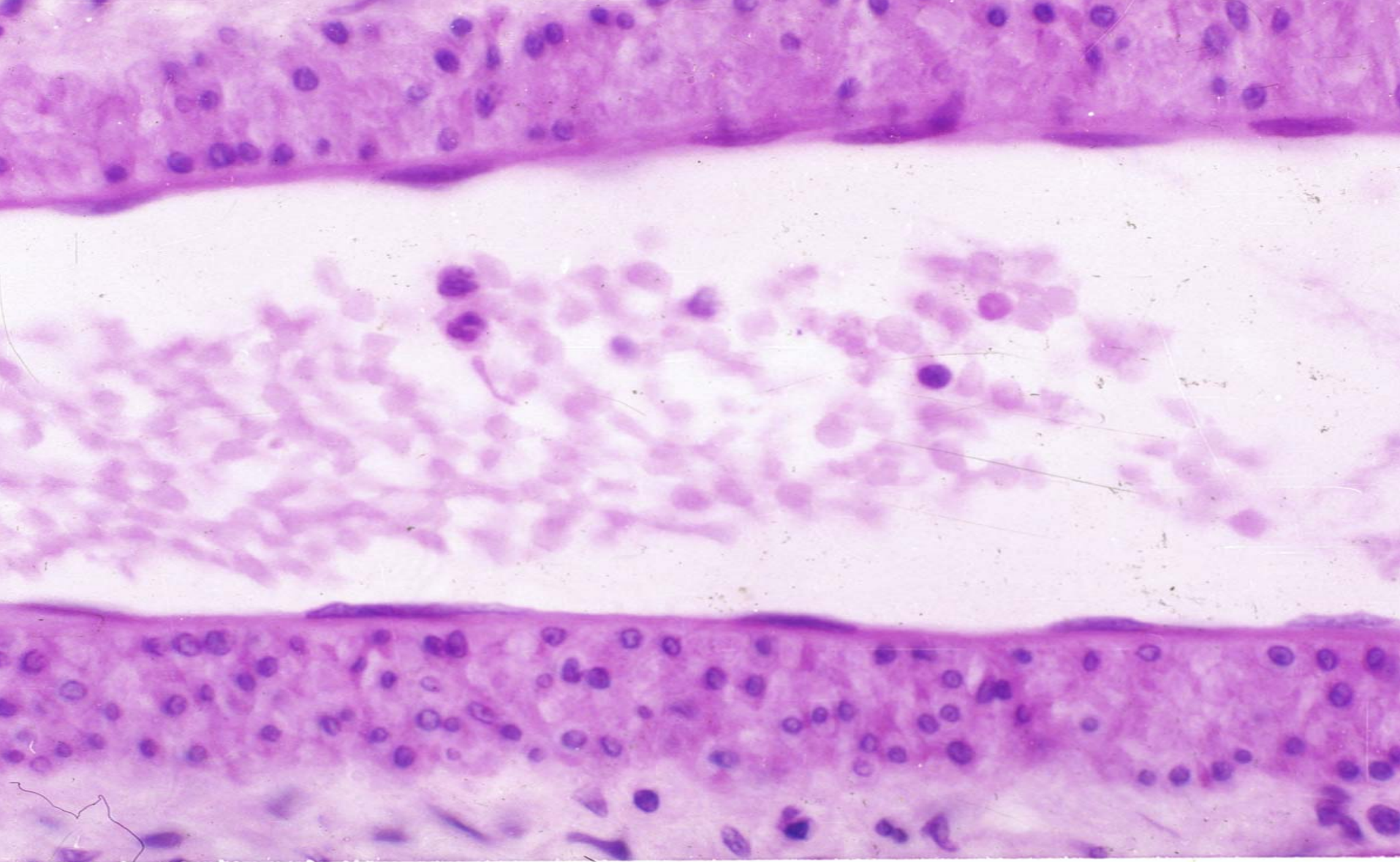
Date:

Summary

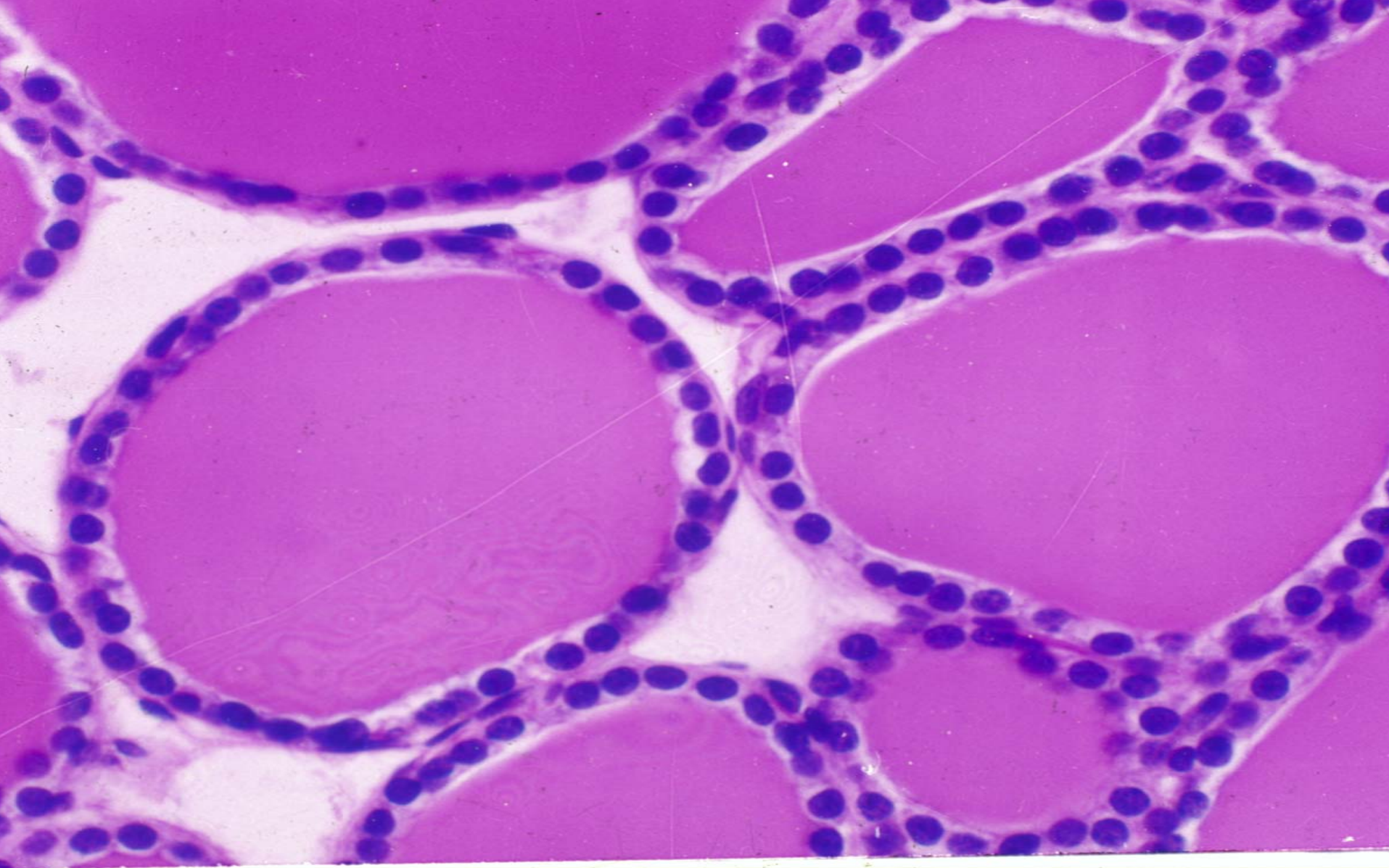
- **the types, microstructure and location of covering epithelium**
- **the types and the location of specialization of the epithelial cell**



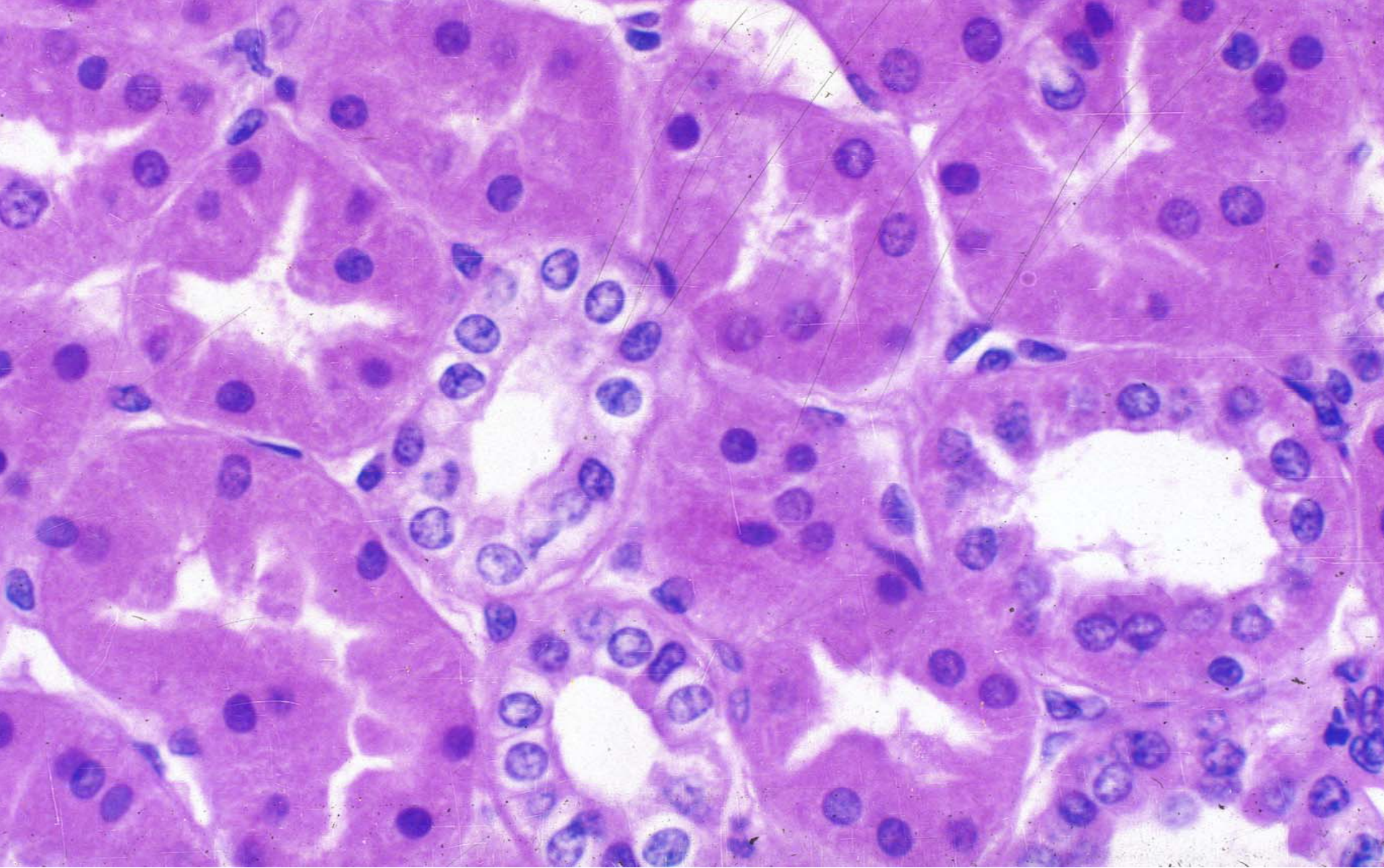
Simple squamous epithelium



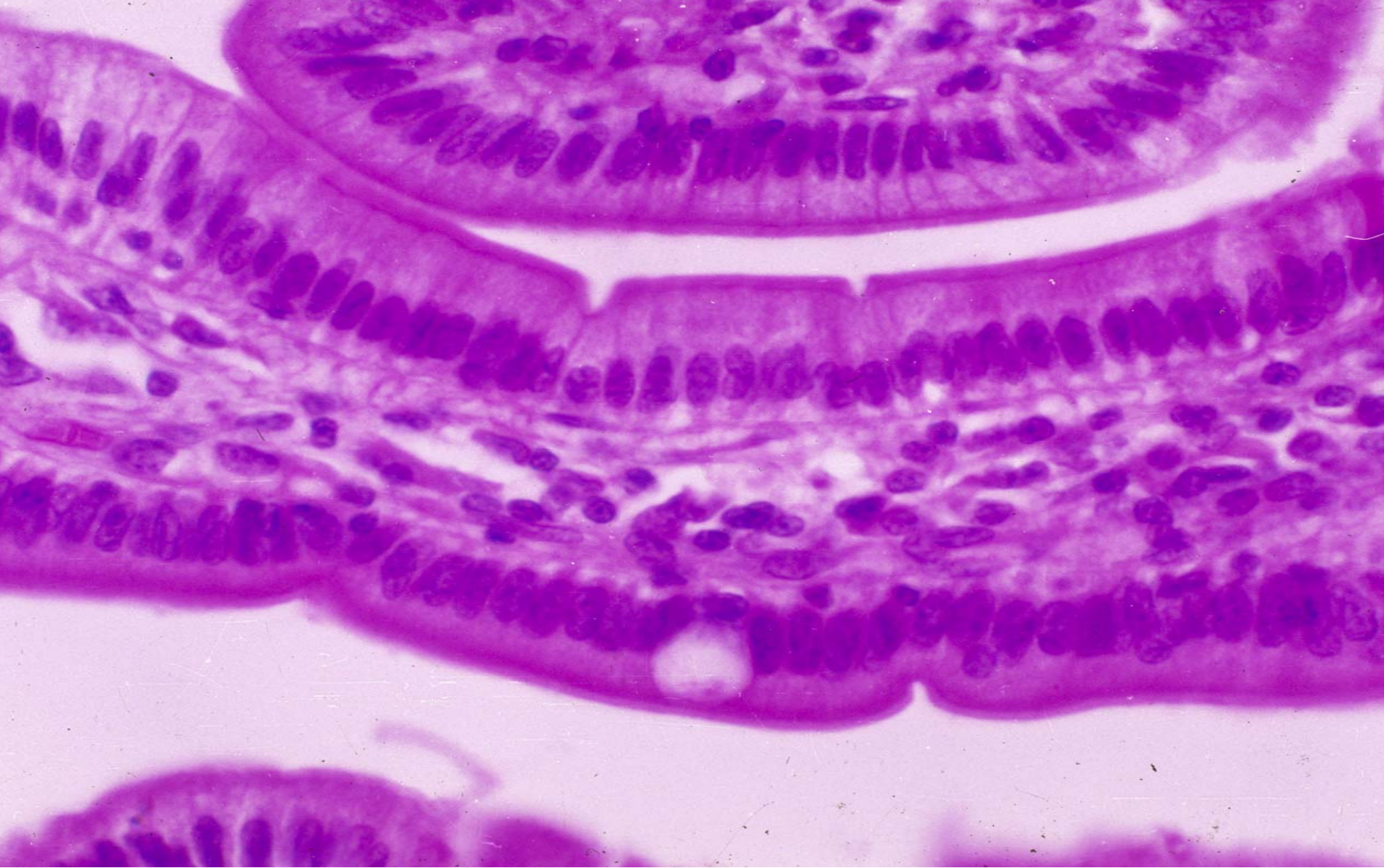
Simple squamous epithelium



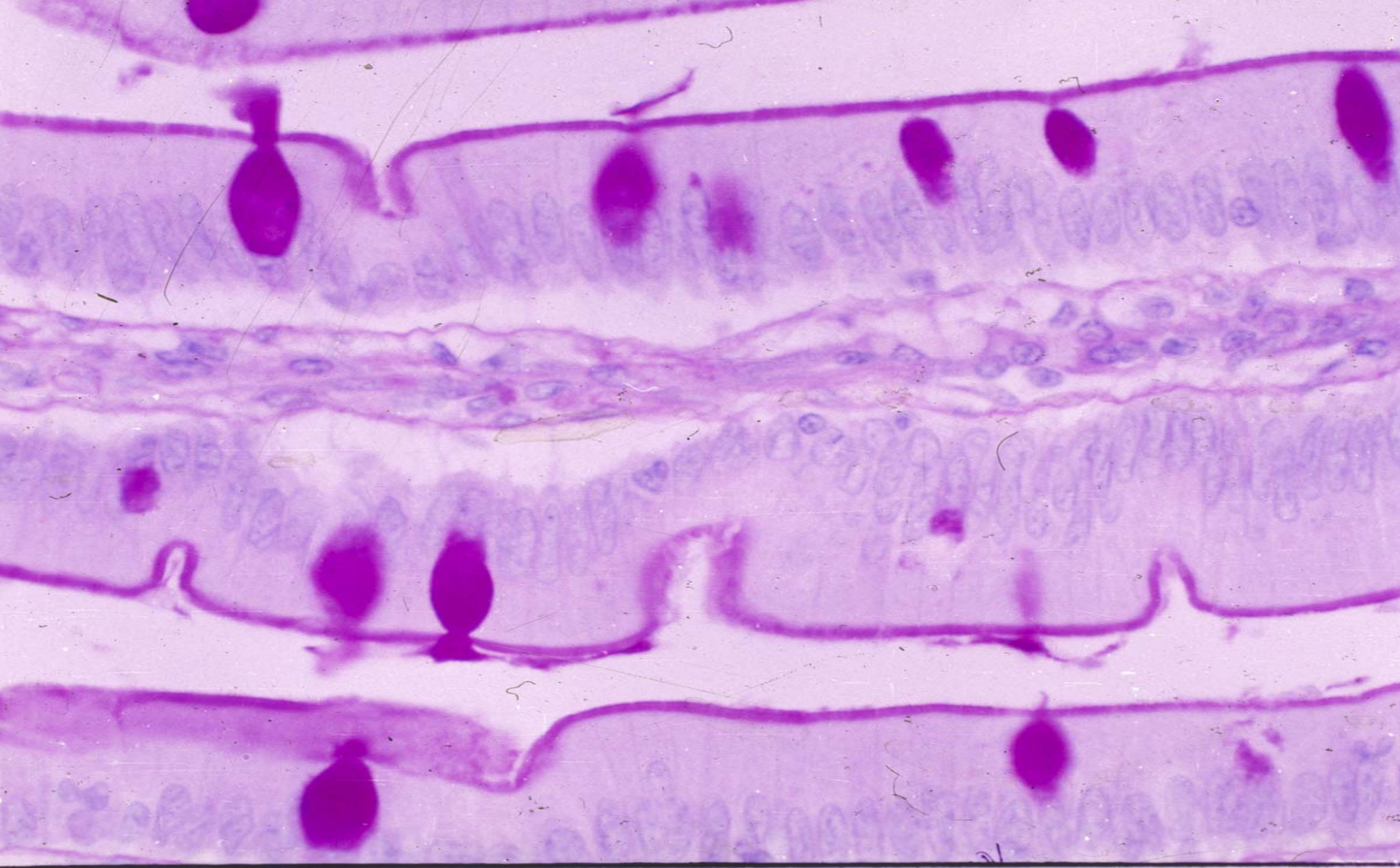
Simple cuboidal epithelium



Simple cuboidal epithelium



Simple columnar epithelium



Simple columnar epithelium



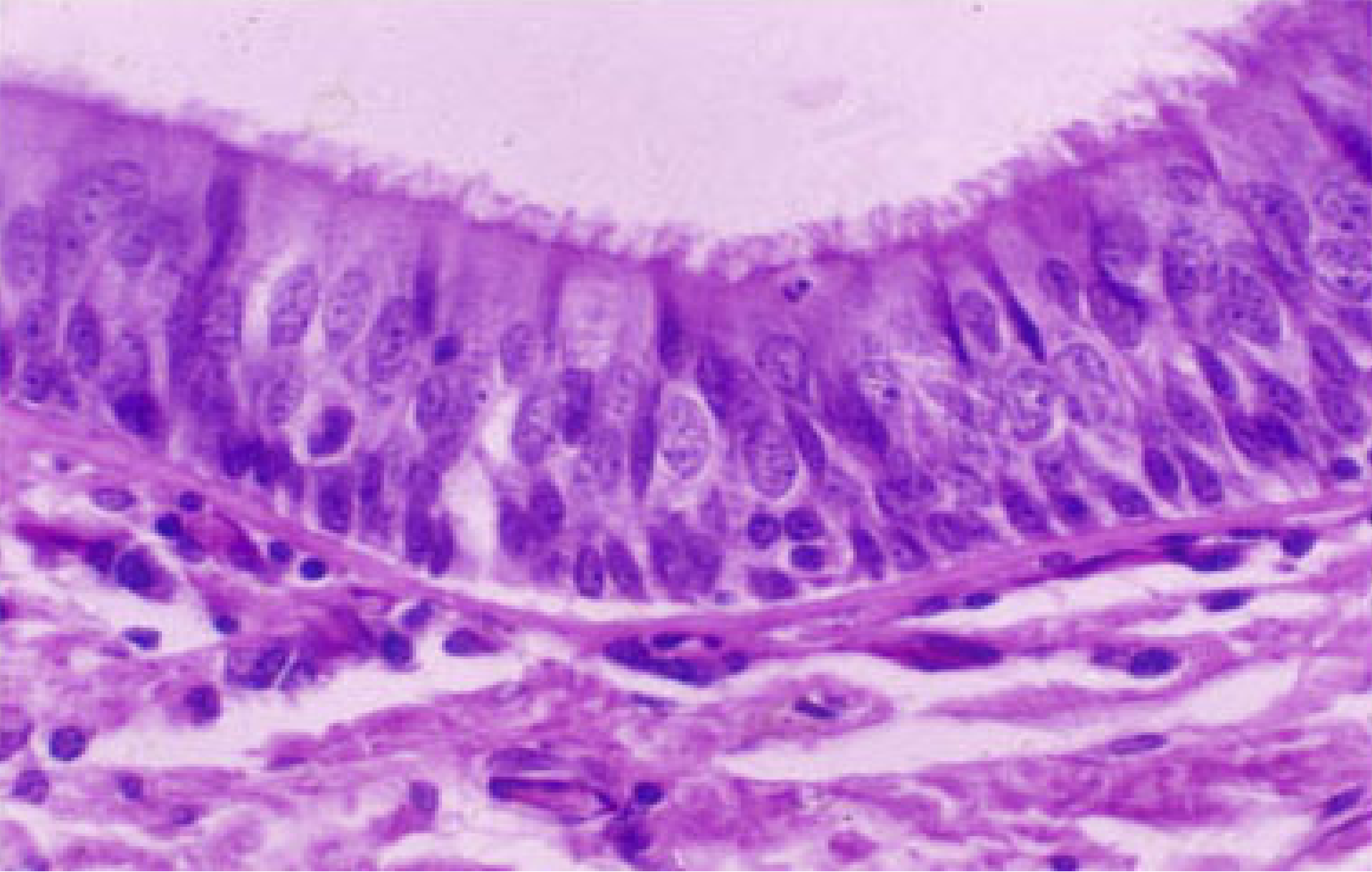
C

M

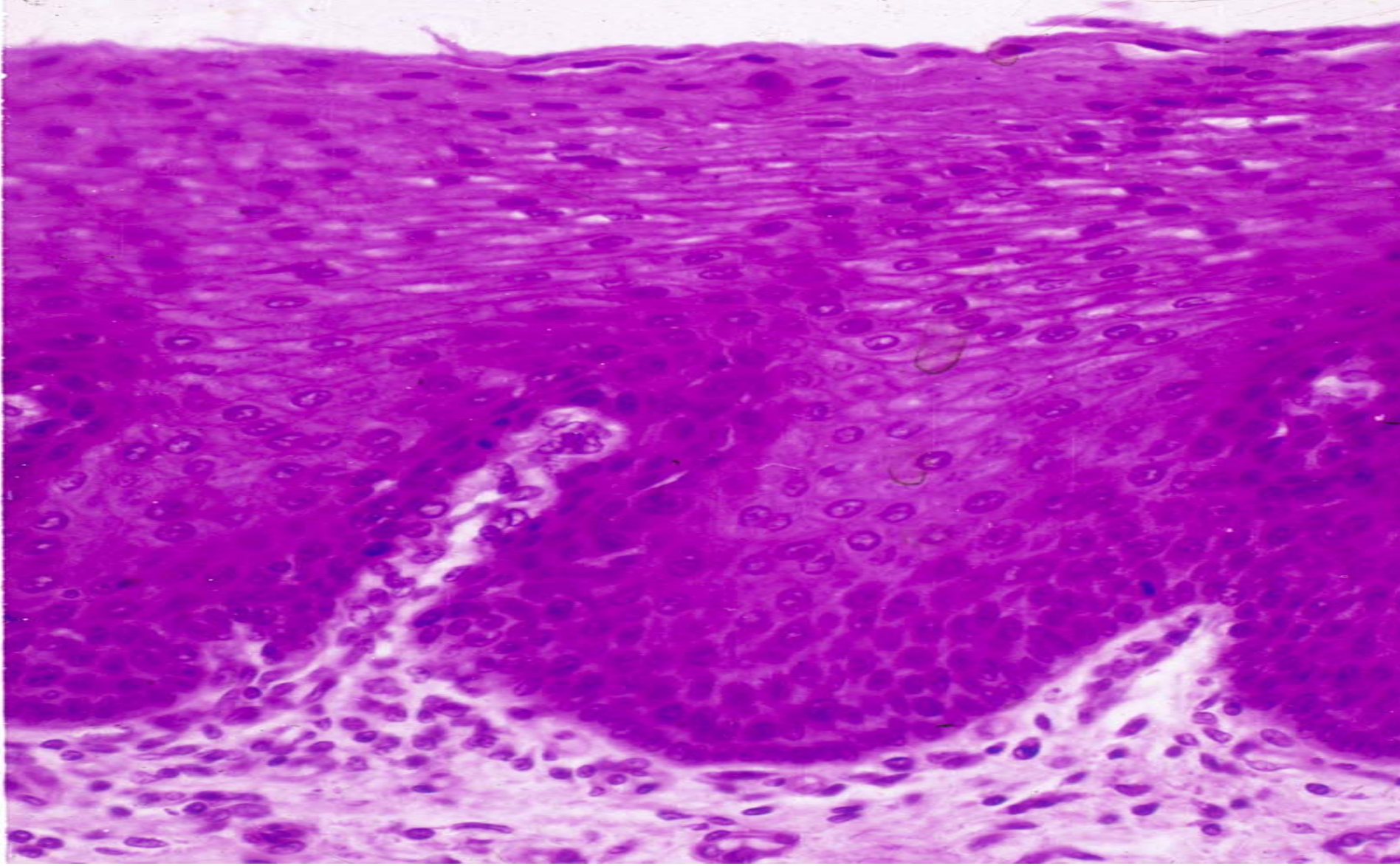
T

L

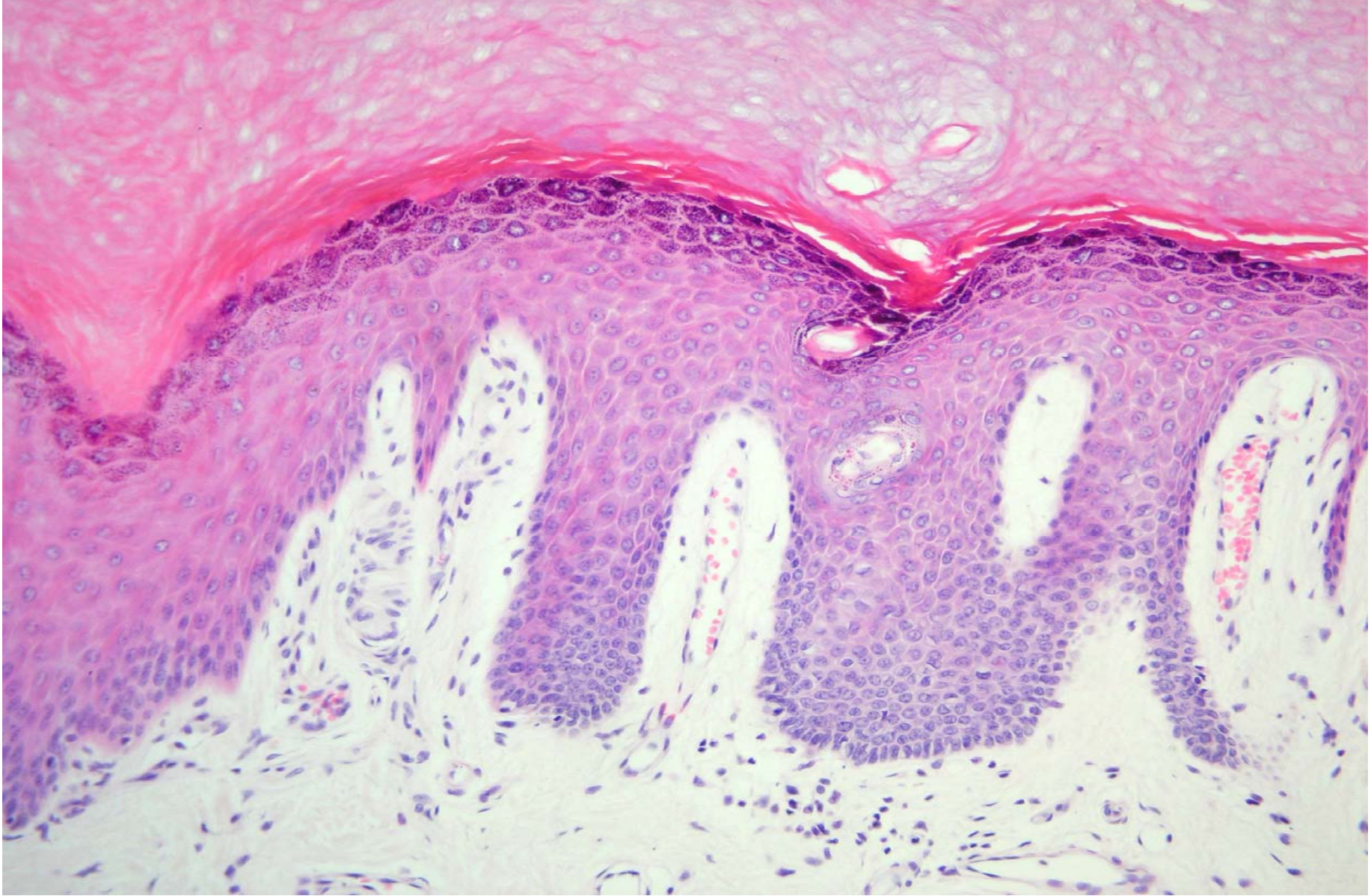
Trachea



Pseudostratified ciliated columnar epithelium



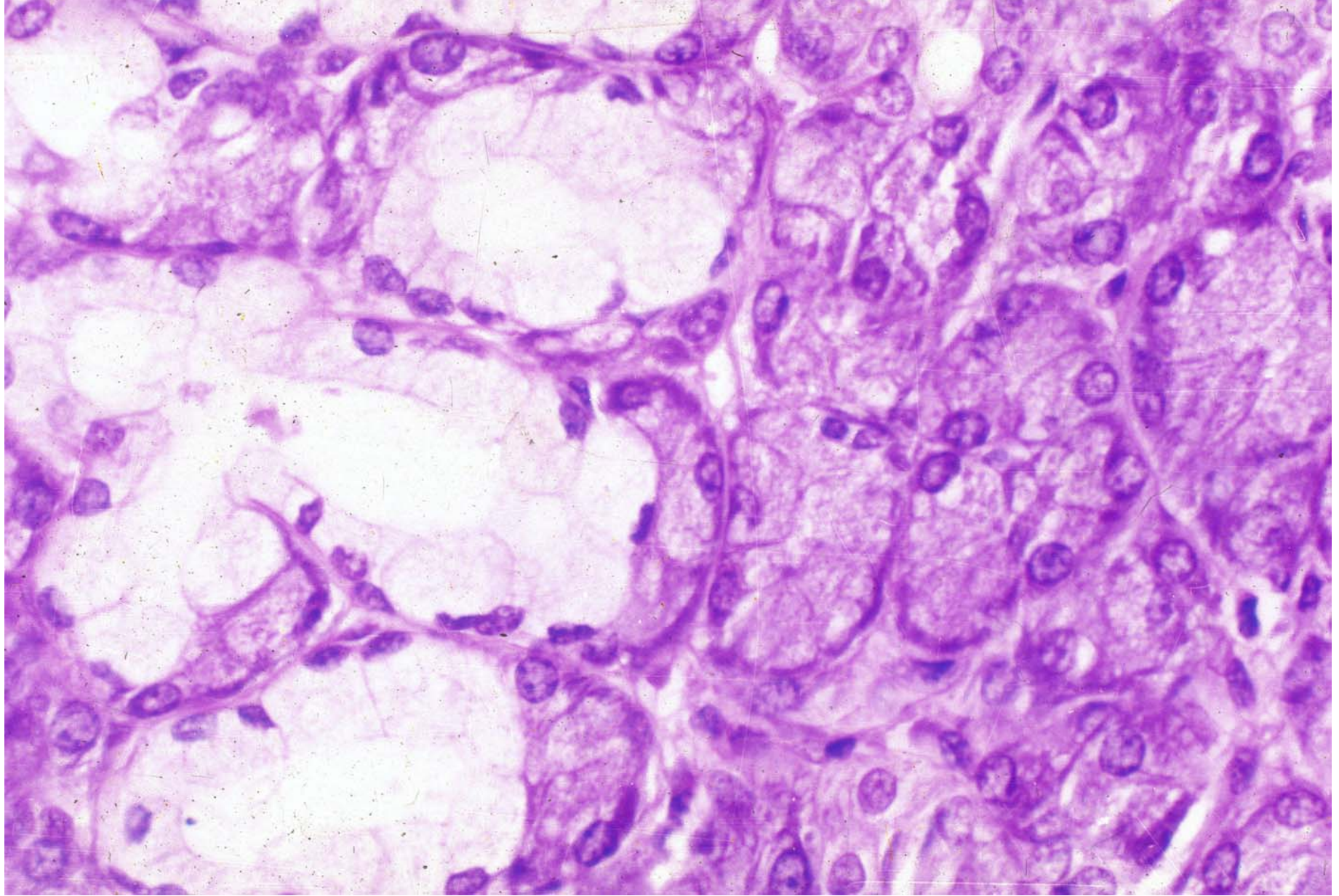
Stratified squamous nonkeratinized epithelium



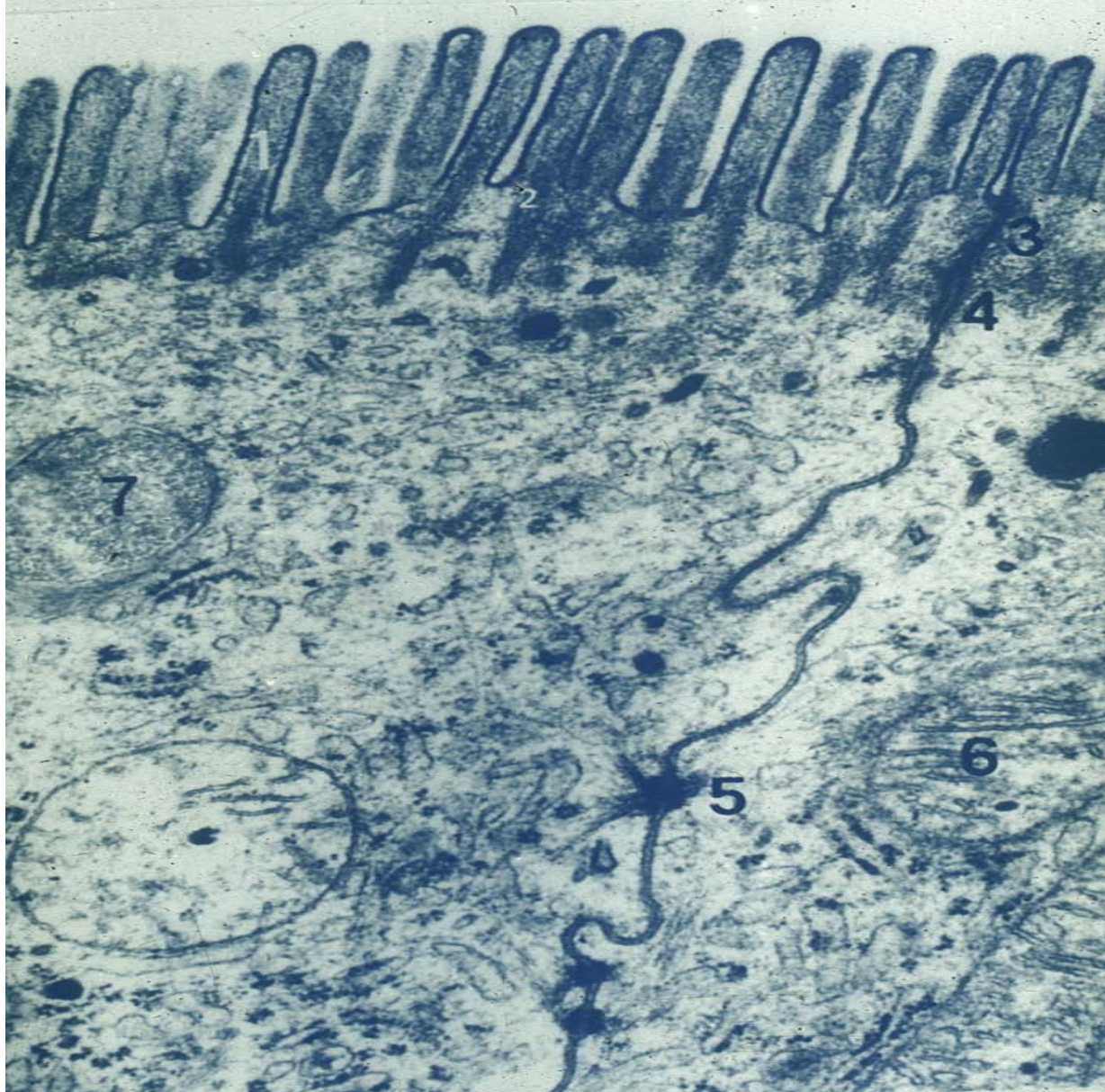
Stratified squamous keratinized epithelium



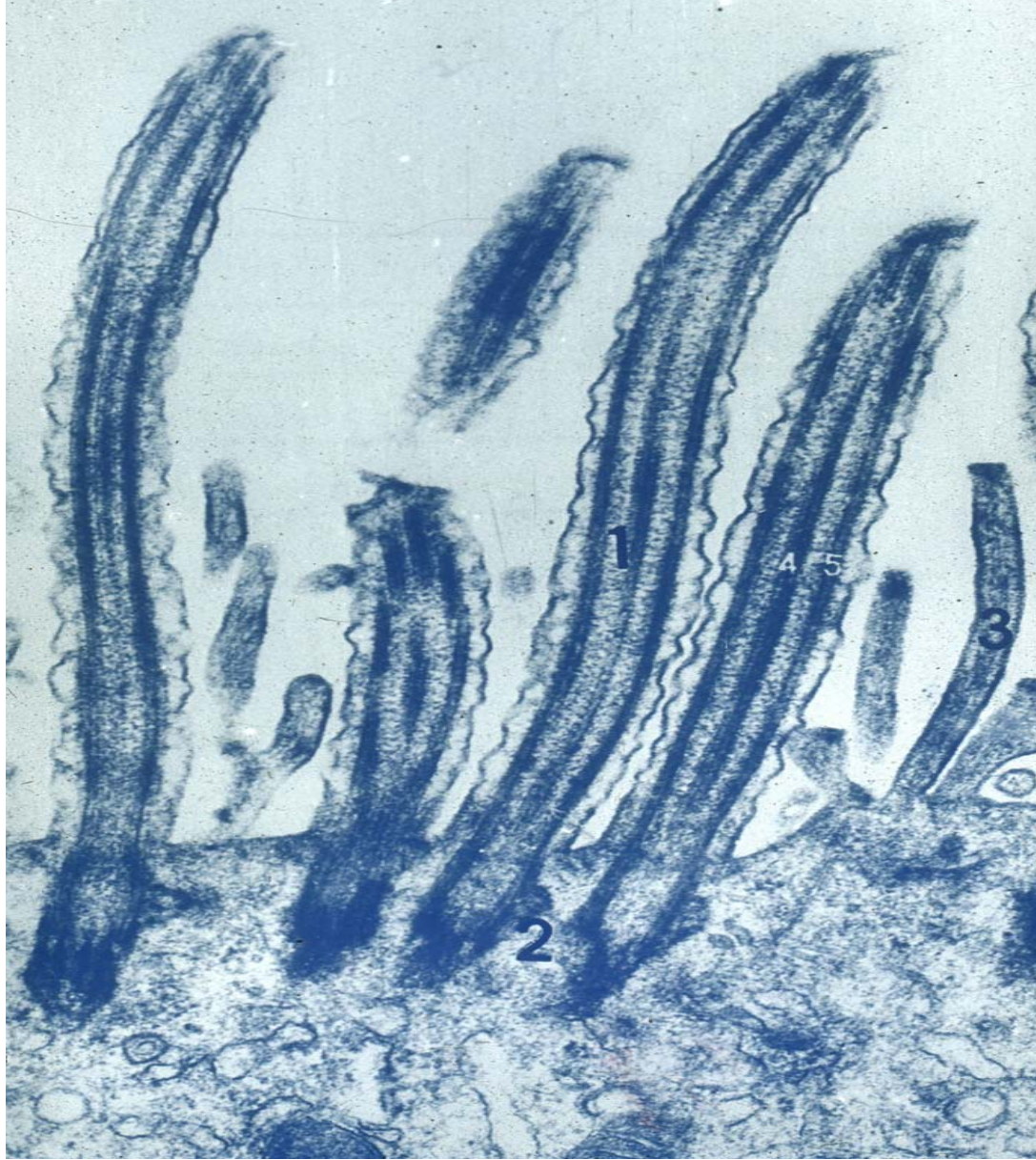
Transitional epithelium



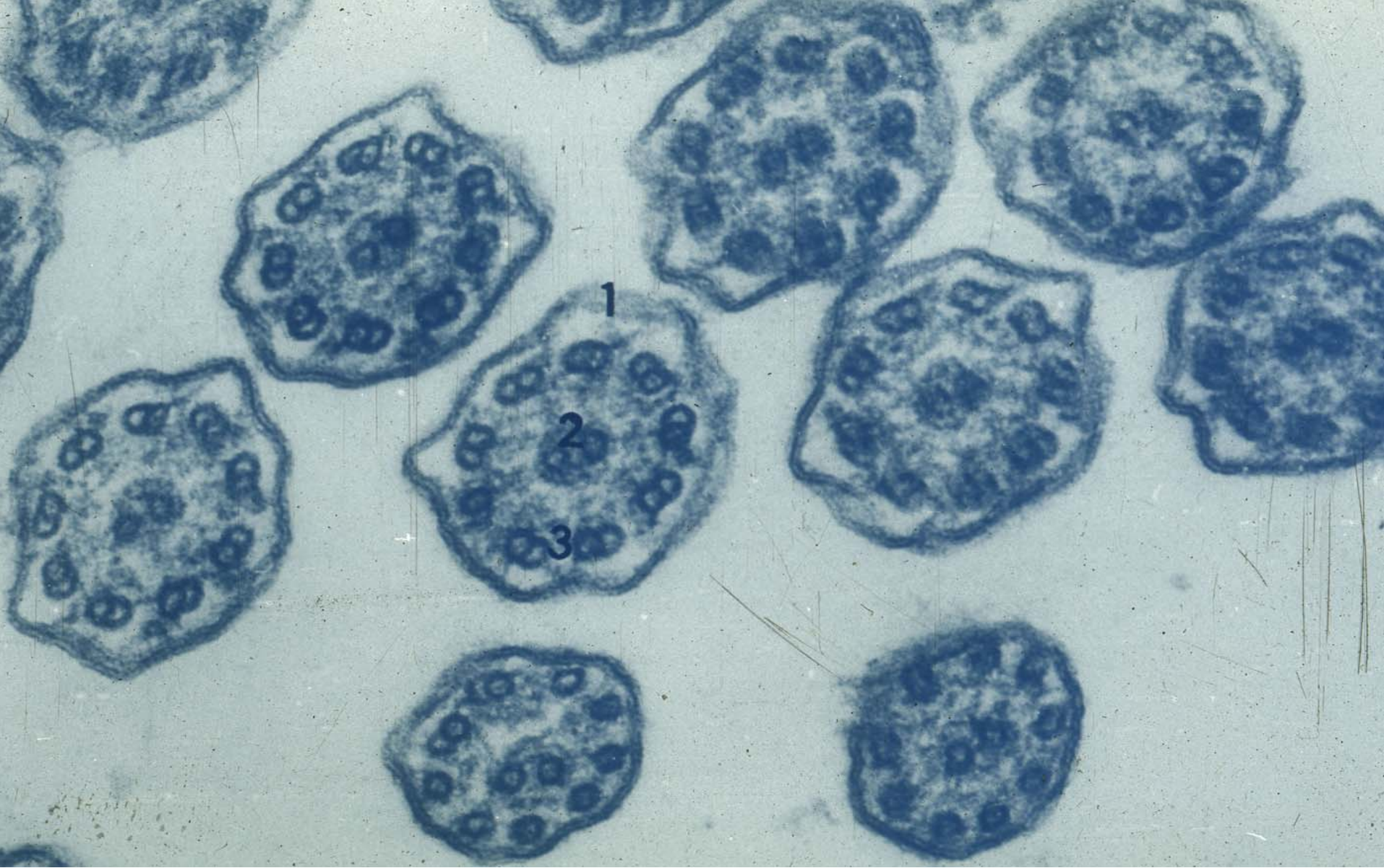
Glandular epithelium



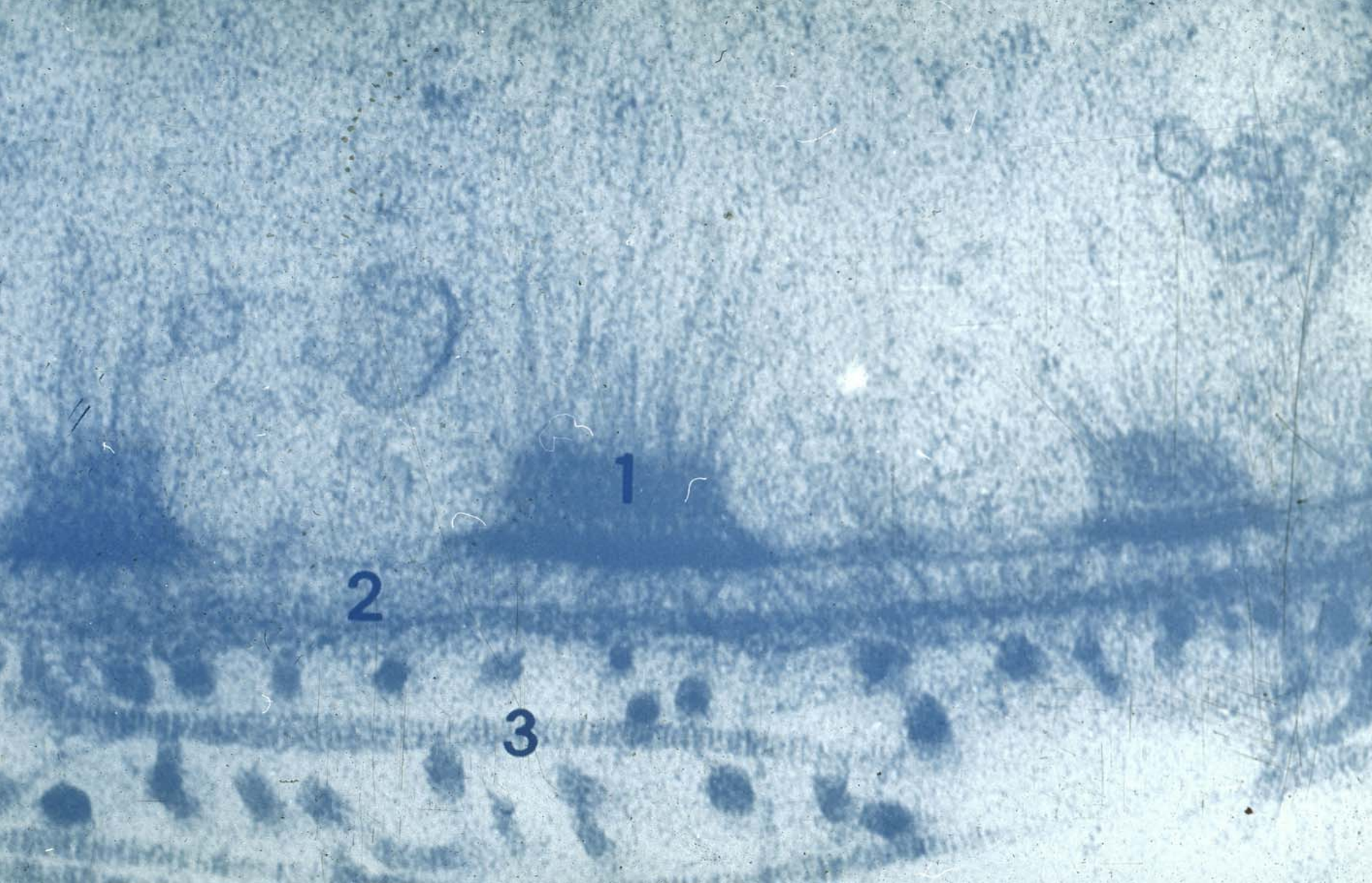
**Tight junction, intermediate junction,
desmosome and microvillus**



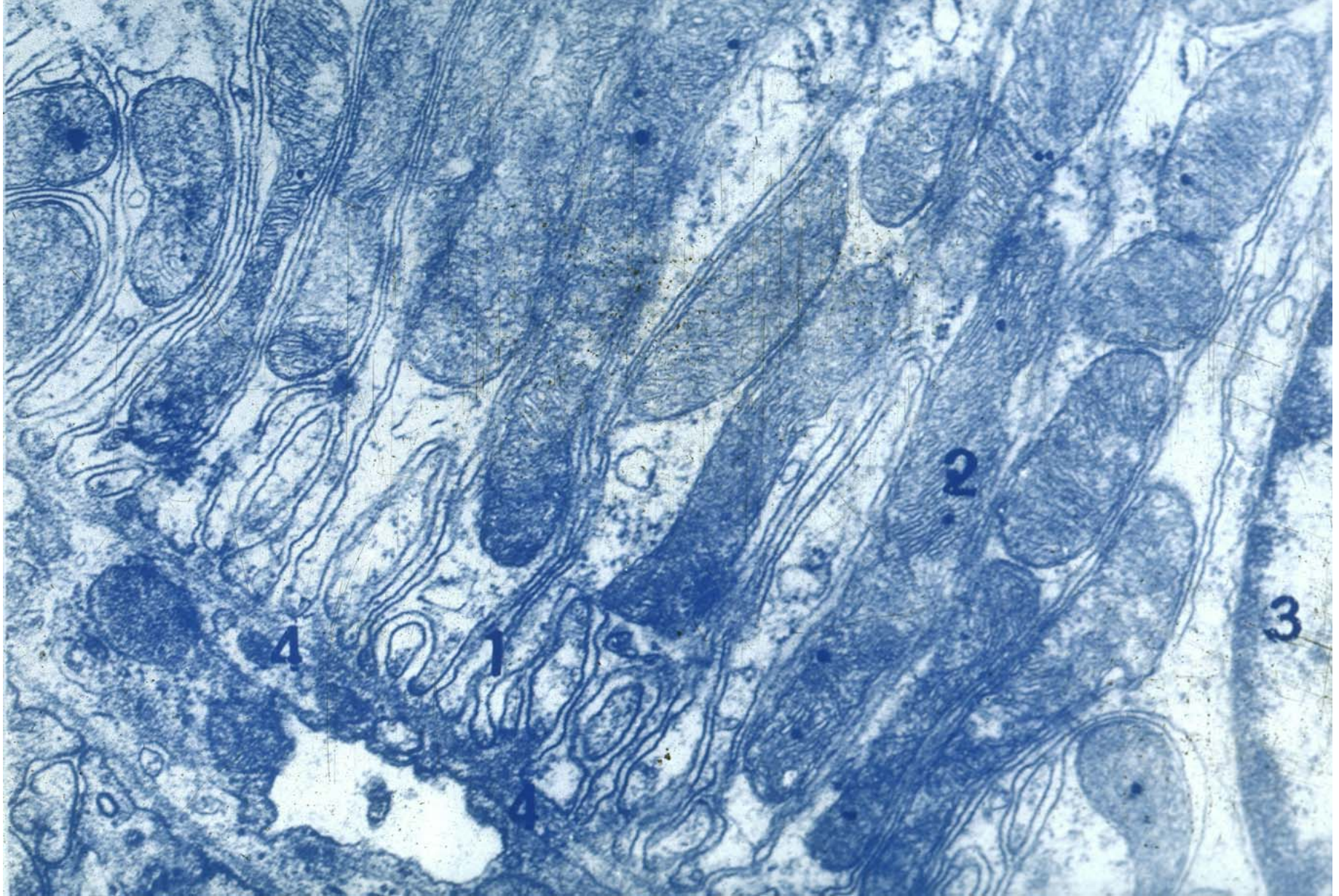
Cilium



Cilium



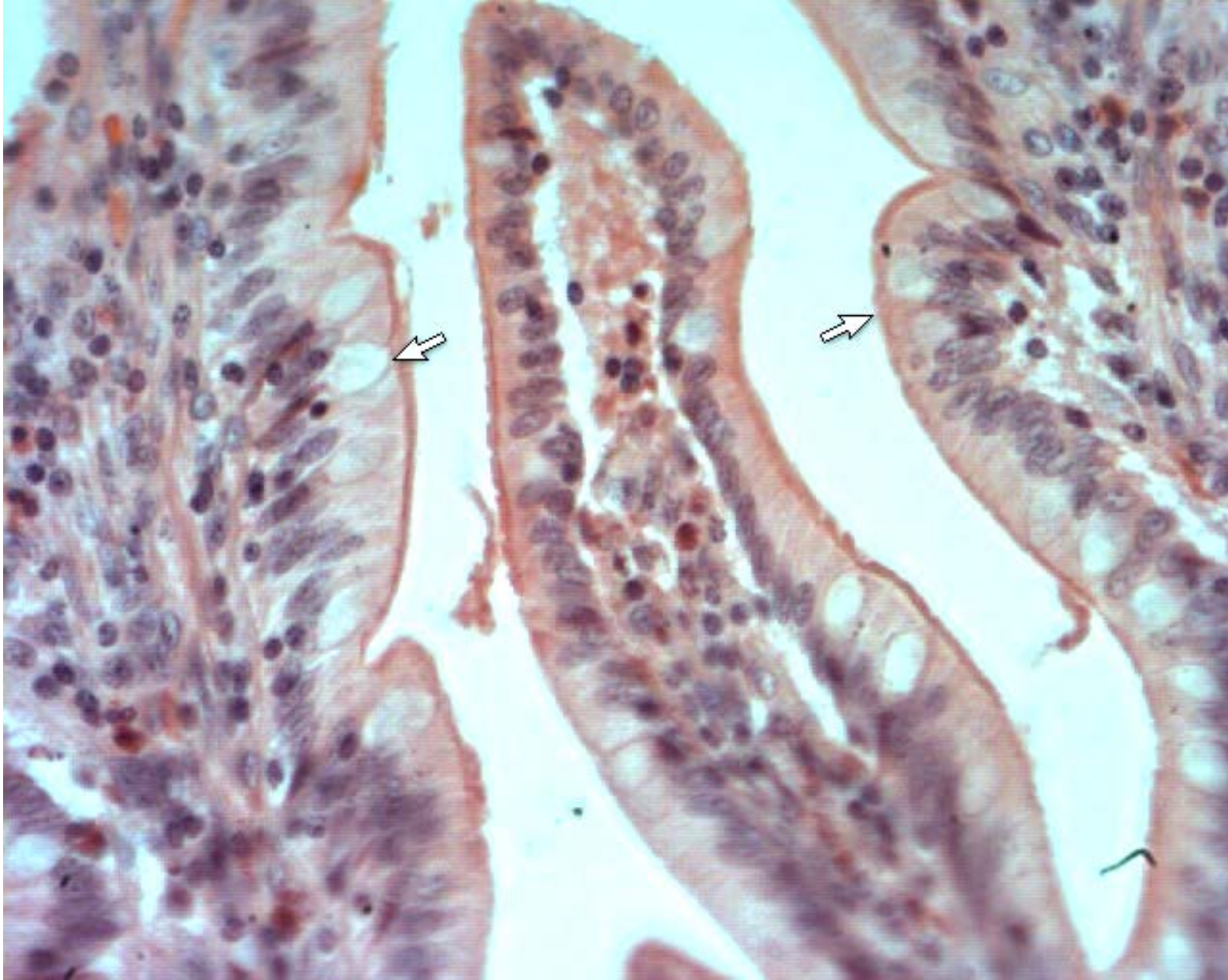
Basement membrane and hemidesmosome



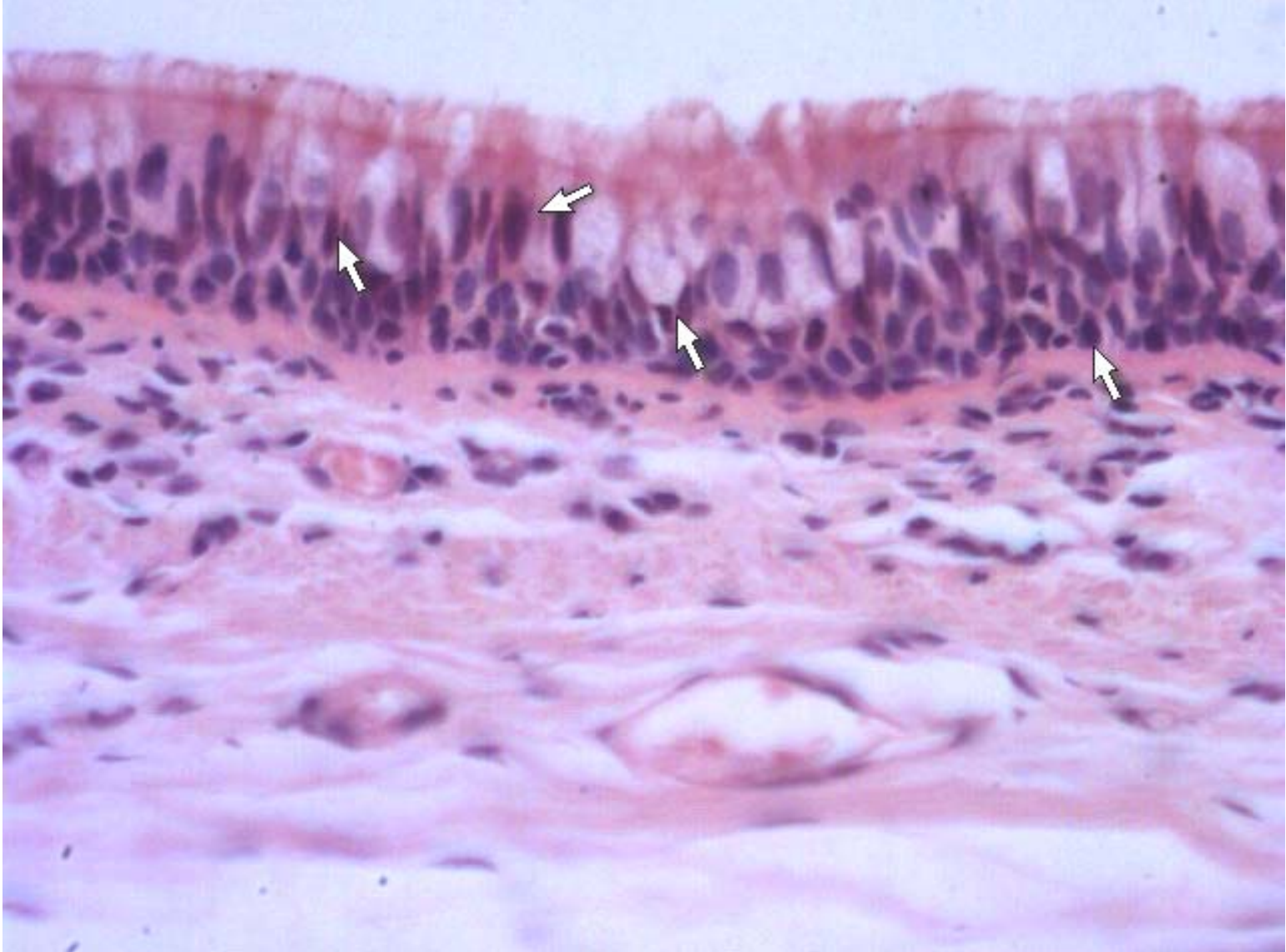
Plasma membrane infolding



Simple cuboidal epithelium



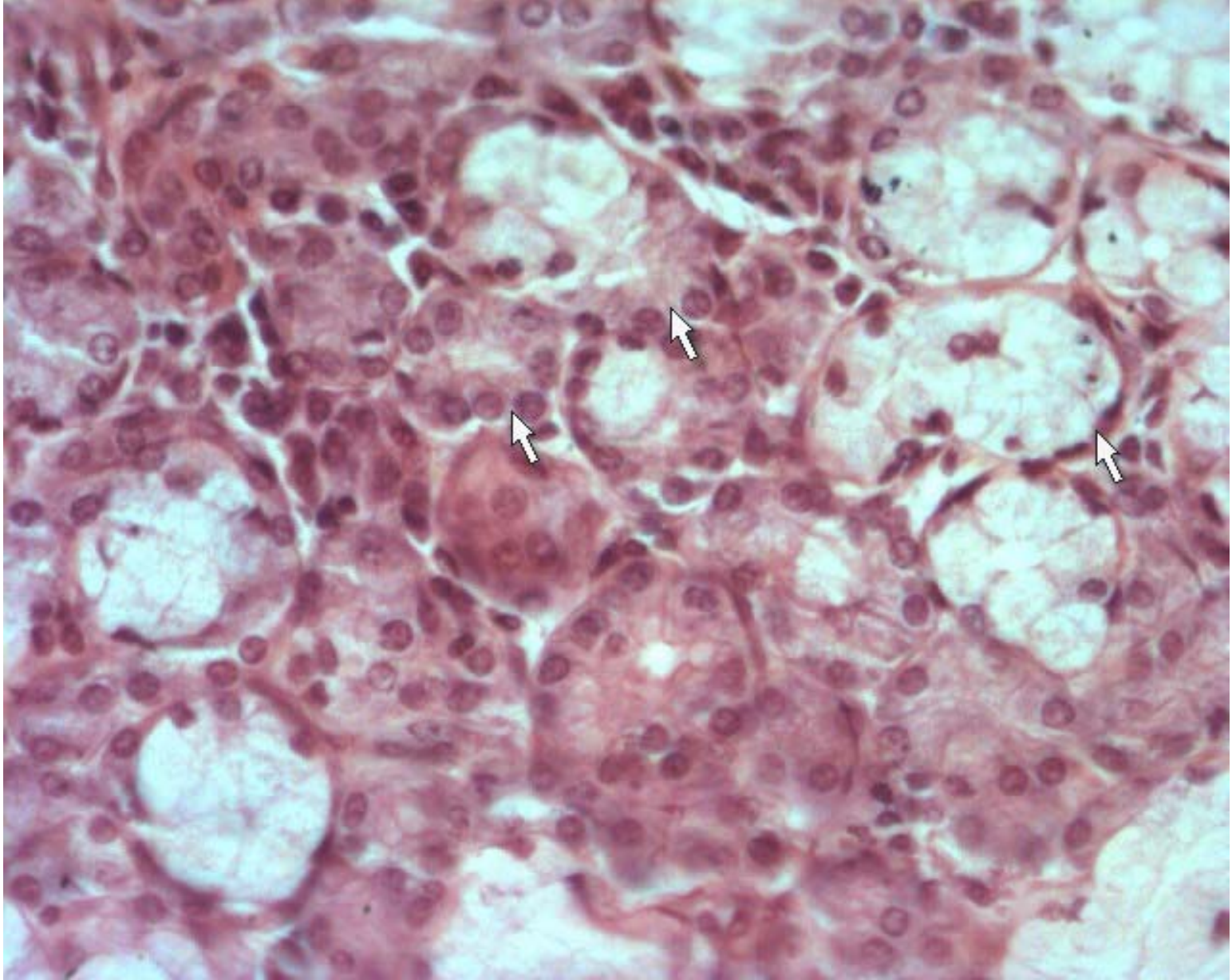
Simple columnar epithelium



Pseudostratified ciliated columnar epithelium



Stratified squamous nonkeratinized epithelium



Glandular epithelium